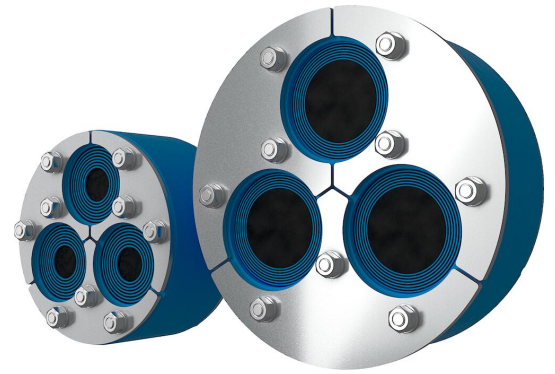




Roxtec Dichtung H3

Öffnenbare Durchführung zur Abdichtung um vorhandene Kabel/Rohre.

Roxtec H3 ist eine runde Abdichtung für Kabel und Rohreinleitungen in Metallmantelrohren oder Kernbohrlochern. Der zweiteilige Aufbau der Dichtung erleichtert den Einbau um vorhandene Kabel und Rohre oder Kabel in Dreiecksanordnung. Die Durchführung besitzt Beschläge aus säurefestem Edelstahl und ist an Kabel und Rohre unterschiedlicher Größe anpassbar. Die Dichtung ist auch mit kleineren vorderen Beschlägen erhältlich, um ein Aufkanten der Beschläge zu vermeiden und einen bündigen Abschluss zu erzielen.



- Beständig gegen Nagetierverbiss
- Perfekt für die Nachrüstung
- Schnelle und einfache Installation

Produkteigenschaften



Feuerhemmend



Wasserdicht



Gasdicht



IP/UL NEMA

Aufbau der Installation



Metall



Beton

Montagetyp



Bestehende Öffnung



Vorhandenes Mantelrohr

Klassifizierungen und Zertifikate

Feuer

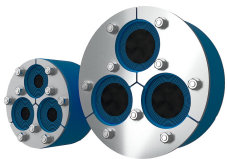
- KLASSE A gemäß IMO 2010 FTP Code
- E/EI-Klassifizierung gemäß EN 13501

Dichtigkeit

- Gas: 2,67 Bar (Katastrophenfall)
- Wasser: 4 bar (Katastrophenfall)
- IP 68

Daten der Abdichtungskomponenten

Dichtkomponenten



Roxtec-Dichtung H



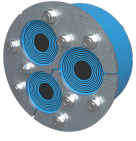
Gleitmittel

Weitere Informationen finden Sie unter www.roxtec.com.

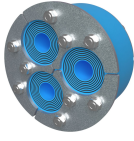


Vorkonfigurierte Durchführungs-Kits

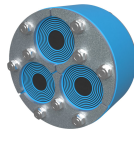
mm/kg



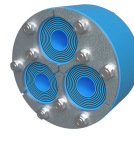
H3-150



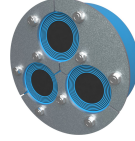
H3-150 WOC



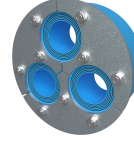
H3-150 INSERTABLE



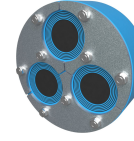
H3-150 INSERTABLE
WOC



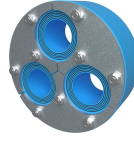
H3-200



H3-200 WOC



H3-200 INSERTABLE



H3-200 INSERTABLE
WOC

Title	Konfiguration	Öffnungsmaße Ø	Gewicht	Art. Nr.
H3-150	3x (24.0-54.0)	150 - 152	2.8	122905
H3-150 WOC	3x (24.0-54.0)	150 - 152	2.8	122906
H3-150 INSERTABLE	3x (24.0-54.0)	150 - 152	2.7	122907
H3-150 INSERTABLE WOC	3x (24.0-54.0)	150 - 152	2.6	122908
H3-200	3x (48.0-70.0)	200 - 202	4.8	122909
H3-200 WOC	3x (48.0-70.0)	200 - 202	4.4	122910
H3-200 INSERTABLE	3x (48.0-70.0)	200 - 202	4.7	122911
H3-200 INSERTABLE WOC	3x (48.0-70.0)	200 - 202	4.1	122912

The product information provided by Roxtec does not release the purchaser of the Roxtec system, or part thereof, from the obligation to independently determine the suitability of the products for the intended process, installation and/or use.

Roxtec gives no guarantee for the Roxtec system or any part thereof and assumes no liability for any loss or damage whatsoever, whether direct, indirect, consequential, loss of profit or otherwise, occurred or caused by the Roxtec systems or installations containing components not manufactured by an authorized manufacturer and/or occurred or caused by the use of the Roxtec system in a manner or for an application other than for which the Roxtec system was designed or intended.

Roxtec expressly excludes any implied warranties of merchantability and fitness for a particular purpose and all other express or implied representations and warranties provided by statute or common law. User determines suitability of the Roxtec system for intended use and assumes all risk and liability in connection therewith. In no event shall Roxtec be liable for indirect, consequential, punitive, special, exemplary or incidental damages or losses.

The Roxtec products are offered and sold in accordance with the conditions of the Roxtec General Terms of Sales. The latest version of the Roxtec General Terms of Sales can be downloaded from <https://www.roxtec.com/en/about-us/about-roxtec/general-terms-of-sales/>

We reserve the right to make changes to the product and technical information without further notice. Any errors in print or entry are no claims for indemnity. The content of this publication is the property of Roxtec International AB and is protected by copyright.

This document was generated on: 2024-04-06